

SECRET  
NO FOREIGN DISSEM

NPIC/R-1447/63

AUGUST 1963

PHOTOGRAPHIC INTERPRETATION REPORT

EDD	W
WER	
RDO	
RIP	
KB	WJ
SHI	
PGS	

IPIR

25X1A

MISSION [REDACTED]  
23 AUGUST 1963

GRC-169 (527)

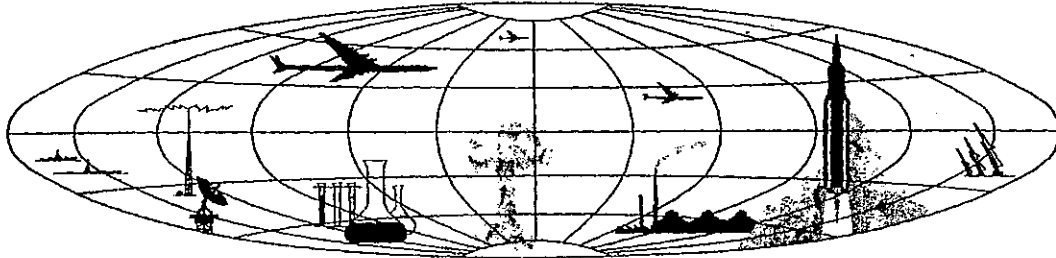


CIA



DIA

NATIONAL PHOTOGRAPHIC INTERPRETATION CENTER



SECRET

GROUP 1  
Excluded from automatic  
downgrading and declassification

WARNING

This document contains information affecting the national defense of the United States, within the meaning of Title 18, sections 793 and 794, of the U.S. Code, as amended. Its transmission or revelation of its contents to or receipt by an unauthorized person is prohibited by law.

NATIONAL PHOTOGRAPHIC INTERPRETATION CENTER

IMMEDIATE PHOTOGRAPHIC INTERPRETATION REPORT

PREFACE

25X1A

THIS REPORT REPRESENTS THE PRELIMINARY INTERPRETATION OF CHURCH DOOR MISSION ██████████ FLOWN ██████████ AND MADE AVAILABLE TO THE US GOVERNMENT BY THE ██████████

25X1A

25X1A

THIS REPORT DEALS PRIMARILY WITH THE HIGHEST PRIORITY INTELLIGENCE ITEMS APPEARING IN THE COMOR TARGET LIST. HOWEVER, IT ALSO INCLUDES OTHER SIGNIFICANT TARGETS OBSERVED DURING THE SCAN OF PHOTOGRAPHY. TARGETS ARE ARRANGED BY SUBJECT AND, WITHIN EACH SUBJECT, BY COMOR TARGET NUMBER, WHICH APPEARS AT THE END OF THE HEADER LINE. SIGNIFICANT TARGETS NOT IN THE COMOR TARGET LIST ARE INCLUDED UNDER THE APPROPRIATE SUBJECT FOLLOWING THE COMOR LISTED TARGETS.

-MISSILES-

25X1A

LU-SHUN. CRUISE MISSILE LAUNCH SITE 3849N 12127E ██████████

9 NM WNW OF LU-SHUN ON HILLTOP OVERLOOKING COAST. UNOCCUPIED, APPARENTLY INACTIVE CRUISE-MISSILE LAUNCH SITE CONTAINS 2 REVETTED LAUNCH POSITIONS AND 2 BUNKERED CONTROL AREAS. TWO LOOP ROADS SERVE LAUNCH SITE AND EXTEND NORTH TO SUPPORT AREA CONTAINING 7 BARRACKS-TYPE BUILDINGS.

25X1A



25X1A

NIEN-TZU-SHAN, ARSENAL 4731N 12252E ██████████

NORTH EDGE OF NIEN-TZU-SHAN. EXTENSIVE RECENT CONSTRUCTION OBSERVED AT LARGE ARSENAL, COMPRISING STORAGE AND PRIMARY PROCESSING AREA WITH 56 BUILDINGS (ONE UNDER CONSTRUCTION), SECONDARY PROCESSING AREA WITH 37 BUILDINGS (19 REVETTED AND SOME WITH BLAST WALLS), AND STORAGE AREA WITH 4 SEPARATE SECTIONS CONTAINING A TOTAL OF 36 BUILDINGS (26 REVETTED). EXPLOSIVES TEST FACILITY, PROBABLY ASSOCIATED WITH

ARSENAL, OBSERVED 4 NM SSE OF ARSENAL.  
(SEE ATTACHMENT 1)

25X1A



25X1A

SHEN-YANG AIRCRAFT ENGINE PLANT 4147N 12330E



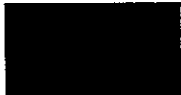
NO EVIDENCE OF ROCKET ENGINE OR AIRCRAFT PRODUCTION  
OBSERVED.  
TEN CREEK/COLT (ONE IN FLIGHT AT SW END OF RUNWAY),  
2 CAB, AND ONE FAGOT OBSERVED ON ASSOCIATED SHEN-YANG  
SE AIRFIELD. NO AIRCRAFT OBSERVED IN PLANT AREA.

25X1A



25X1A

SHEN-YANG AIRFRAME PLANT 112 4152N 12325E



25X1A NO APPARENT CHANGE IN FACILITIES SINCE MISSION  
OBSERVED IN CLOUD-FREE AREAS. HAZE  
PRECLUDES IDENTIFICATION OF MATERIAL OR EQUIPMENT IN  
PLANT AREA. TWO FARMER AIRCRAFT OBSERVED AT ADJACENT  
AIRFIELD.

25X1A



-AIRFIELDS-

25X1A

CHANG-CHUN AIRFIELD WEST 4354N 12512E



25X1A 2 NM NW OF CHANG-CHUN.  
NO APPARENT CHANGE IN FACILITIES SINCE MISSION  
OBSERVED IN CLOUD-FREE AREAS. HAZE  
PRECLUDES IDENTIFICATION OF MATERIAL OR EQUIPMENT IN  
PLANT AREA. TWO FARMER AIRCRAFT OBSERVED AT ADJACENT  
AIRFIELD.  
AIRCRAFT -- HAZE AND SCATTERED CLOUDS PRECLUDE  
DETERMINATION OF PRESENCE OF AIRCRAFT.

25X1A



25X1A

CHOU-SHUI-TZU AIRFIELD 3858N 12133E



ONE NM SOUTH OF CHOU-SHUI-TZU.  
TWO PARALLEL WNW/ESE CONCRETE RUNWAYS, 6,400 X 190 FT.  
AND 5,600 X 190 FT, SERVICEABLE.

FACILITIES OBSERVED IN CLOUD-FREE AREAS INCLUDE 2 FORMER RUNWAYS IN USE AS TAXIWAYS, 15 REVETTED HARDSTANDS, 3 LINK TAXIWAYS, ALERT APRON, PARKING APRON, AND HANGAR. NO NEW CONSTRUCTION OBSERVED. AIRCRAFT -- 14 FAGOT, 15 FRESCO, AND ONE CRATE.

25X1A



25X1A

KAI-YUAN AIRFIELD 4231N 12400E

25X1A

6.5 NM SSW OF KAI-YUAN.  
NO APPARENT CHANGE IN FACILITIES SINCE MISSION

25X1A

AIRCRAFT -- 17 FAGOT/FRESCO AND 31 UNIDENTIFIED SINGLE-ENGINE STRAIGHT-WING AIRCRAFT.

25X1A



25X1A

KU-SHAN-TZU AIRFIELD 4201N 12544E

16.5 NM SW OF KU-SHAN-TZU AND ONE NM SW OF TIAO-YU-TAI.  
AIRFIELD SITE 20 PER CENT OBSCURED BY CLOUDS AND HAZE. NO NEW CONSTRUCTION OR RADAR OBSERVED IN CLOUD-FREE AREAS.  
AIRCRAFT -- 17 POSSIBLE FAGOT/FRESCO.

25X1A



25X1A

KU-TIEN-TZU AIRFIELD 4401N 12623E

25X1A

11 NM NW OF CHIN-LIN.  
NO APPARENT CHANGE IN FACILITIES SINCE MISSION

25X1A

AIRCRAFT -- 67 FAGOT/FRESCO, ONE BEAGLE, AND ONE PROBABLE STRAIGHT-WING AIRCRAFT.

25X1A



25X1A

KUAN-TIEN AIRFIELD WEST 4042N 12436E

APPROXIMATELY 10 NM WSW OF KUAN-TIEN.  
AIRFIELD 10 PER CENT CLOUD COVERED.  
NO APPARENT CHANGE IN FACILITIES SINCE MISSION OBSERVED IN CLOUD-FREE AREAS.

25X1A



AIRCRAFT -- NONE OBSERVED.

25X1A



25X1A

LIAO-YANG AIRFIELD WEST 4116N 12305E



5 NM WEST OF LIAO-YANG.

25X1A

NO APPARENT CHANGE IN FACILITIES SINCE MISSION

AIRCRAFT -- 14 FARMER AND 23 FAGOT/FRESCO.

25X1A



25X1A

MUKDEN AIRFIELD NORTH 4152N 12326E



2 NM NORTH OF SHEN-YANG (MUKDEN) AND ADJACENT TO SHEN-YANG AIRFRAME PLANT 112.

AIRFIELD SITE 50 PER CENT CLOUD COVERED.

25X1A

NO APPARENT CHANGE IN FACILITIES SINCE MISSION OBSERVED IN CLOUD-FREE AREAS. AIRCRAFT -- 2 FARMER OBSERVED ON TAXIWAY.

25X1A



25X1A

PU-LAN-TIEN AIRFIELD 3927N 12201E



4 NM NE OF PU-LAN-TIEN.

25X1A

NO APPARENT CHANGE IN FACILITIES SINCE MISSION RUNWAY SERVICEABLE.

25X1A

NO NEW CONSTRUCTION OBSERVED.

AIRCRAFT -- 40 FAGOT/FRESCO, ONE COLT, AND 3 STRAIGHT-WING SINGLE-ENGINE AIRCRAFT.

25X1A



25X1A

PU-LAN-TIEN AIRFIELD SOUTH 3919N 12158E



4.8 NM SOUTH OF PU-LAN-TIEN.

AIRFIELD 60 PER CENT CLOUD COVERED.

25X1A

NO APPARENT CHANGE IN FACILITIES SINCE MISSION OBSERVED IN CLOUD-FREE AREAS. AIRCRAFT -- NONE OBSERVED IN CLOUD-FREE AREAS.

25X1A



25X1A

SAN-SHIH-LI-PU AIRFIELD 3917N 12146E

2 NM NW OF SAN-SHIH-LI-PU.  
NO APPARENT CHANGE IN FACILITIES SINCE MISSION

25X1A [REDACTED]  
AIRCRAFT -- 16 FAGOT/FRESCO.

25X1A [REDACTED]

TA-PAO AIRFIELD 4032N 12413E

.5 NM SW OF TA-PAO.  
AIRFIELD APPEARS OPERATIONAL. NO NEW CONSTRUCTION  
OBSERVED.  
AIRCRAFT -- 27 PROBABLE FAGOT/FRESCO.

25X1A [REDACTED]

TENG-AO-PAO AIRFIELD 4106N 12251E

AIRFIELD SITE 60 PER CENT CLOUD COVERED.  
NO APPARENT CHANGE IN FACILITIES SINCE MISSION  
OBSERVED IN CLOUD-FREE AREAS.  
AIRCRAFT -- 8 FARMER AND 2 FAGOT/FRESCO OBSERVED  
IN CLOUD-FREE AREAS.

25X1A [REDACTED]

25X1A [REDACTED]

TU-CHENG-TZU AIRFIELD 3854N 12115E

5 NM NORTH OF LU-SHUN.  
NO APPARENT CHANGE IN FACILITIES SINCE MISSION  
AIRCRAFT -- 28 BEAGLE.

25X1A [REDACTED]

25X1A [REDACTED]

YA-MEN-TUN AIRFIELD 4714N 12355E

1.6 NM WEST OF YA-MEN-TUN AND 6.3 NM SSW OF  
CHI-CHI-HA-ERH.  
7,200 X 200 FT NNW/SSE CONCRETE RUNWAY, SERVICEABLE.  
FACILITIES INCLUDE OLD NNW/SSE AND WNW/ESE RUNWAYS

25X1A [REDACTED]

IN USE AS PARKING APRONS, LOOP TAXIWAY EAST OF RUNWAY WITH 4 CROSSOVER LINKS AND 2 PARKING APRONS, HANGAR, SECURED STORAGE AREA WITH 13 BUNKERED BUILDINGS APPROXIMATELY ONE NM SSE OF RUNWAY, AND ANOTHER SECURED STORAGE AREA WITH 3 STORAGE BUILDINGS ONE NM EAST OF RUNWAY.  
AIRCRAFT -- NONE OBSERVED.

25X1A



25X1A

YEN-TAI AIRFIELD SOUTH 3724N 12121E

8 NM SOUTH OF YEN-TAI.  
6,400 X 200 FT NE/SW CONCRETE RUNWAY, SERVICEABLE.  
NO NEW CONSTRUCTION OBSERVED.  
AIRCRAFT -- 65 FAGOT/FRESCO.  
(SEE ATTACHMENT 2)

25X1A



YING-CHENG-TZU AIRFIELD 3901N 12123E

.5 NM NORTH OF YING-CHENG-TZU.  
6,600 X 180 FT NE/SW CONCRETE RUNWAY, SERVICEABLE.  
FIVE VEHICLES AND UNIDENTIFIED MATERIAL OBSERVED ON TAXIWAY AND PARKING APRON.  
NO NEW CONSTRUCTION OBSERVED.  
AIRCRAFT -- NONE OBSERVED.

25X1A



LA-LIN AIRFIELD 4514N 12653E

AIRFIELD SITE APPROXIMATELY 60 PER CENT CLOUD COVERED.  
ON VISIBLE PORTION OF AIRFIELD, CONSTRUCTION APPEARS COMPLETED.  
HEAVY CLOUDS PRECLUDE OBSERVATION OF FACILITIES.  
AIRCRAFT -- NONE OBSERVED.

25X1A





NPIC/R-1447/63  
25X1A

NEN-CHIANG AIRFIELD NORTH 4914N 12521E

5.7 NM NE OF NEN-CHENG.  
AIRFIELD 70 PER CENT CLOUD COVERED.  
NO FACILITIES OBSERVED IN CLOUD-FREE AREAS.  
CLOUDS AND OBLIQUITY PRECLUDE DETAILED INTERPRETATION.  
AIRCRAFT -- NONE OBSERVED.

25X1A



25X1A

TUNG-FENG AIRFIELD (1) 4239N 12530E

IDENTIFICATION ONLY.

25X1A



HAILAR AIRFIELD SOUTH 4911N 11944E

NO AIRFIELD OBSERVED AT LOCATION.

25X1A



HAILAR AIRFIELD SOUTHWEST 4909N 11941E

3.5 NM SW OF HAI-LA-ERH.  
6,200 X 200 FT NW/SE CONCRETE RUNWAY, SERVICEABLE.  
FACILITIES INCLUDE TAXIWAY WITH CONCRETE PARKING RAMP  
AND 4 CROSSOVER LINKS NE OF RUNWAY AND THE FOLLOWING:  
UNDER CONSTRUCTION AT NE END OF RUNWAY -- CONTROL  
TOWER/ADMINISTRATIVE BUILDING, 2 LARGE HANGARS NEARING  
COMPLETION, TAXIWAY TO HANGAR AREA, 13 SUPPORT  
BUILDINGS, AND FIRING BUTT NEARING COMPLETION.  
IN ADDITION, 15 PROBABLE TENTS AND MISCELLANEOUS  
TEMPORARY BUILDINGS OBSERVED NE OF AIRFIELD, AND  
RAIL SPUR TERMINATES AT WEST END OF RUNWAY.  
AIRCRAFT -- NONE OBSERVED.  
(SEE ATTACHMENT 3)

25X1A



-PORTS-

25X1A

LU-SHUN SUBMARINE BASE 3847N 12114E

ONE NM SSW OF LU-SHUN ON SOUTH SHORE OF HSI-CHIANG

25X1A

(RIVER).  
NO APPARENT CHANGE IN FACILITIES SINCE MISSION

25X1A

VESSELS -- 7 W-CLASS SUBMARINES, ONE PROBABLE  
W-CLASS SUBMARINE, 12 PT, 2 PF, 3 FREIGHTERS, AND  
NUMEROUS SMALL CRAFT.

25X1A

25X1A

TA-LIEN SHPYDS SINO-SOV PT ARTH DAIREN . 3855N 12138E

NORTH EDGE OF TA-LIEN.  
NO APPARENT CHANGE IN FACILITIES SINCE MISSION

25X1A

VESSELS -- 18 FREIGHTERS, ONE PROBABLE PF, 2  
PROBABLE PC, AND NUMEROUS SMALL CRAFT.

25X1A

-MILITARY ACTIVITY-

CHANG-CHUN AREA, MILITARY INSTALLATION 4351N 12526E.

5 NM ESE OF CHANG-CHUN.  
SECURED, ROAD-SERVED INSTALLATION OBSERVED. LARGE  
MULTI-WING ADMINISTRATIVE BUILDING, APPROXIMATELY 25  
BARRACKS-TYPE BUILDINGS, AND APPROXIMATELY 30 SMALLER  
ASSOCIATED BUILDINGS VISIBLE IN CLOUD-FREE AREAS.  
PROBABLE MANEUVER AREA OBSERVED IMMEDIATELY EAST OF  
INSTALLATION.

25X1A

25X1A

LIAO-YANG SUB ARSENAL MUKDEN 90TH 4117N 12315E

4.5 NM ENE OF LIAO-YANG.  
NO APPARENT CHANGE IN FACILITIES SINCE MISSION  
OBSERVED IN CLOUD-FREE AREAS.  
NO RAILROAD CARS OBSERVED.

25X1A

25X1A

TAO-AN AREA, ORDNANCE TEST FACILITY, 4543N 12239E

25X1A

APPROXIMATELY 10.7 NM NW OF TAO-AN.  
ORDNANCE TEST FACILITY COMPRISES SUPPORT COMPLEX,  
EXPLOSIVES STORAGE AREA, RAIL-SERVED STORAGE FACILITY,  
FIRING AREA, TEST AREA, COMMUNICATIONS FACILITY, AND  
INSTRUMENTED RANGE SIMILAR TO THAT IDENTIFIED AT  
TU-KO-MA-CHING TEST FACILITY, CHINA.

RAIL-SERVED SUPPORT COMPLEX CONTAINS APPROXIMATELY  
132 BUILDINGS, INCLUDING 5 LARGE ADMINISTRATIVE-TYPE,  
9 STORAGE-TYPE (3 RAIL SERVED), 8 LARGE SHOP-TYPE,  
53 PERSONNEL-TYPE, AND 48 SUPPORT-TYPE BUILDINGS,  
3 MOTOR POOLS, 7 HEATING PLANTS, AND 2 LARGE EARTH-  
COVERED BUNKERS.

EXPLOSIVES STORAGE AREA, APPROXIMATELY 2 NM NW OF  
SUPPORT COMPLEX AT 45-44-50N 122-37-00E, CONTAINS 5  
LARGE AND 5 SMALL REVETTED BUILDINGS AND ONE BUILDING  
UNDER CONSTRUCTION. AREA IS DOUBLE FENCED WITH LIGHT  
POLES AND GUARD TOWERS POSITIONED ALONG PERIMETER  
FENCE.

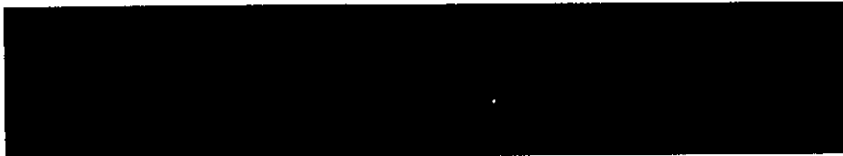
FENCED, RAIL-SERVED ASSOCIATED STORAGE AREA,  
APPROXIMATELY 1.5 NM SSW OF THE SUPPORT COMPLEX AT  
45-42-30N 122-38-00E, CONTAINS 10 LARGE STORAGE-TYPE  
AND ONE SMALL SUPPORT-TYPE BUILDING. FENCED SUPPORT-  
TYPE FACILITY, ADJACENT TO STORAGE AREA, CONTAINS  
HEATING PLANT, 3 BARRACKS-TYPE BUILDINGS, MESS HALL,  
AND 5 OTHER BUILDINGS.

FIRING AREA CONTAINS 11 CONCRETE FIRING POSITIONS,  
INCLUDING 3 OVAL EYEBALL REVETMENTS SIMILAR TO SOME  
POSITIONS IDENTIFIED AT TU-KO-MA-CHING TEST FACILITY,  
5 PROBABLE SHOPS AND 2 HEATING PLANTS TO THE REAR OF  
THE FIRING POSITIONS, AND T-SHAPED BUILDING ENCLOSED  
BY CIRCULAR EARTHEN REVETMENT HIGHER THAN THE  
BUILDING. A SERIES OF TOWERS, ALSO SIMILAR TO THOSE  
AT TU-KO-MA-CHING TEST FACILITY, EXTENDS APPROXIMATELY  
10 NM DOWNRANGE FROM FIRING AREA.

TEST AREA, IMMEDIATELY EAST OF FIRING POSITIONS,  
COMPRISES 5 SEPARATE AREAS, 4 OF WHICH CONSIST OF A  
BUILDING WITH OPEN-ROOFED RECTANGULAR ANNEX MADE UP  
OF A SERIES OF FRAMES OR PARTITIONS, THE LONG AXIS OF  
WHICH IS ORIENTED DOWNRANGE. EXTENDING DOWNRANGE FROM  
ALL 5 AREAS ARE CONCRETE ROADS OF VARYING LENGTHS ON  
WHICH ARE LOCATED 3-5 TURNOUTS THAT SERVICE TARGETS OR  
BILLBOARDS SIMILAR TO THOSE AT TU-KO-MA-CHING TEST  
FACILITY.

SMALL COMMUNICATIONS FACILITY WITH AT LEAST 12 STICK  
MASTS IS LOCATED IN THE MAIN SUPPORT COMPLEX.  
(SEE ATTACHMENT 4)

25X1A



25X1A

LIAO-YANG ARMY BARRACKS SOUTHWEST 4114N 12307E



2 NM SW OF LIAO-YANG.

25X1A

NO APPARENT CHANGE IN FACILITIES SINCE MISSION  
OBSERVED IN CLOUD-FREE AREAS.  
TWENTY-NINE PROBABLE FA PIECES AND 38 PROBABLE CARGO  
TRUCKS OBSERVED.

25X1A



25X1A

CHINA-N KOREA BORDER AREA 4007N 12423E



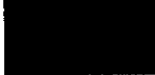
NUMEROUS SEARCHLIGHT POSITIONS AND NUMEROUS  
OCCUPIED 4-GUN AAA POSITIONS OBSERVED IN CLOUD-FREE  
AREAS ON CHINA SIDE OF BORDER AT MOUTH OF YALU RIVER.

25X1A



25X1A

SHEN-YANG--AN-TUNG RAIL & ROADS 4148N 12327E



AREA OBSERVED SE FROM PEN-CHI (41-17N 123-45E) FOR  
APPROXIMATELY 25 NM.  
NO ROAD OR RAILROAD CONSTRUCTION ACTIVITY OBSERVED IN  
CLOUD-FREE AREAS.  
ROADS AND RAILROAD LINE OBSERVED IN CLOUD-FREE AREAS  
APPEAR SERVICEABLE, BUT NO RAILROAD OR ROAD TRAFFIC  
OBSERVED.  
NO TROOP OR VEHICLE CONCENTRATIONS OBSERVED IN  
CLOUD-FREE AREAS.

25X1A



-COMPLEXES-

25X1A

HAI-LA-ERH (HAILAR) COMPLEX 4913N 11944E



NO MAJOR INDUSTRIES OBSERVED IN AREA.  
RAILROAD FACILITIES INCLUDE 2 CLASSIFICATION YARDS,  
CAR STORAGE YARD, PASSENGER STATION, ROUNDHOUSE, AND

COAL STORAGE YARD. SEVEN STEAM LOCOMOTIVES, 67 PROBABLE TANK CARS, 83 PROBABLE GONDOLA CARS, AND 54 PROBABLE BOX CARS OBSERVED IN RAILROAD FACILITIES. NO NEW CONSTRUCTION OBSERVED. (SEE ATTACHMENT 5)

25X1A



25X1A

AN-SHAN COMPLEX 4107N 12257E



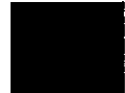
COMPLEX APPROXIMATELY 30 PER CENT CLOUD COVERED. 25X1A  
LARGE STEEL PLANT, REPORTED IN MISSION [REDACTED] 9 MAY 63, APPEARS INACTIVE, WITH NO SMOKE EMITTING FROM ANY SMOKESTACKS.  
NO INDUSTRIAL SMOKE FROM SMALLER PLANTS OBSERVED IN CLOUD-FREE AREAS.  
LARGE POWER PLANT APPEARS INACTIVE.  
APPROXIMATELY 200 RAILROAD CARS IN RAILROAD CLASSIFICATION YARDS OBSERVED IN CLOUD-FREE AREAS.

25X1A



25X1A

CHI-CHI-HA-ERH COMPLEX 4721N 12358E



COMPLEX COMPRISES 7 MAJOR PLANTS (INCLUDING RAILROAD CAR MANUFACTURING, METAL FABRICATION, CHEMICAL PROCESSING, AND WOOD PRODUCTS), NUMEROUS SMALLER INDUSTRIES, AND RAILROAD YARD WEST OF CHI-CHI-HA-ERH CONTAINING APPROXIMATELY 220 RAILROAD CARS. ALL MAJOR INDUSTRIES APPEAR ACTIVE, ALTHOUGH SMOKE OBSERVED EMITTING FROM ONLY ONE STACK IN WOOD PRODUCTS PLANT.  
ADDITIONAL 800-900 RAILROAD CARS OBSERVED 15 NM SSW OF CHI-CHI-HA-ERH AT SAN-CHIEN-FANG (47-06N 123-50E) BUT OBLIQUITY PRECLUDES IDENTIFICATION OF TYPE. (SEE ATTACHMENTS 6, 7, AND 8)

25X1A



FU-SHUN COMPLEX 4152N 12353E

25X

25X1A NO APPARENT CHANGE IN FACILITIES SINCE MISSION

ALL INDUSTRIAL FACILITIES APPEAR ACTIVE, BUT HAZE AND CLOUD COVER PRECLUDE DETERMINATION OF EXTENT OF ACTIVITY.

25X1A

25X1A

HA-ERH-PIN COMPLEX 4545N 12639E

COMPLEX 95 PER CENT CLOUD COVERED. NO ACTIVITY AT INDUSTRIAL FACILITIES AND NO SMOKE EMITTING FROM SMOKESTACKS OBSERVED IN CLOUD-FREE AREAS. HEAVY CLOUDS AND HAZE PRECLUDE DETERMINATION OF NUMBER AND TYPE OF RAILROAD CARS IN CLASSIFICATION YARDS.

25X1A

FU-LA-ERH-CHI COMPLEX 4712N 12339E

COMPLEX INCLUDES RAIL-SERVED, APPARENTLY ACTIVE METAL FABRICATION PLANT ON WEST EDGE OF FU-LA-ERH-CHI CONTAINING 25 LARGE FABRICATION/SHOP-TYPE BUILDINGS (ONE APPARENTLY RECENTLY CONSTRUCTED), AN ADDITIONAL RAIL-SERVED, APPARENTLY ACTIVE METAL FABRICATION PLANT IMMEDIATELY EAST CONTAINING 9 LARGE FABRICATION/SHOP-TYPE AND NUMEROUS SMALLER SUPPORT BUILDINGS (SMOKE EMITTING FROM SOME SMOKESTACKS), LARGE THERMAL ELECTRIC POWER PLANT IMMEDIATELY SOUTH OF METAL FABRICATION PLANTS (SMOKE EMITTING FROM TALL SMOKESTACK), POL STORAGE AREA ONE NM NW OF FU-LA-ERH-CHI WITH 4 LARGE, 4 MEDIUM, AND 16 SMALL STORAGE TANKS, AND SECURED STORAGE AREA IMMEDIATELY NORTH OF RAILROAD BRIDGE EAST OF FU-LA-ERH-CHI WITH 30 STORAGE BUILDINGS, AND 2 LOADING SHEDS. APPROXIMATELY 125 RAILROAD CARS OBSERVED WITHIN COMPLEX. (SEE ATTACHMENT 9)

25X1A

25X1A

SHEN-YANG (MUKDEN) COMPLEX 4148N 12327E

25X1A NO APPARENT CHANGE IN FACILITIES SINCE MISSION OBSERVED IN CLOUD-FREE AREAS. APPROXIMATELY 1,100 RAILROAD CARS OBSERVED IN COMPLEX, BUT HAZE PRECLUDES IDENTIFICATION OF TYPE.

25X1A

25X1A

AN-TA-CHAN AREA, OIL FIELDS 4636N 12500E

18 NM NW OF AN-TA-CHAN. OIL FIELDS AND ASSOCIATED COMPLEX, APPROXIMATELY 45 SQ MI IN AREA, INCLUDE ONE POSSIBLE REFINERY IN EARLY STAGES OF CONSTRUCTION, ONE REFINERY IN LATE STAGES OF CONSTRUCTION, AND UNIDENTIFIED INDUSTRIAL AREA UNDER CONSTRUCTION. (SEE ATTACHMENTS 10, 11, AND 12).

25X1A

25X1A

PEI-AN COMPLEX 4814N 12631E

TARGET 90 PER CENT CLOUD COVERED. NO INDUSTRY OR RAILROAD CLASSIFICATION YARDS OBSERVED IN CLOUD-FREE AREAS.

25X1A

25X1A

LIAO-YANG COMPLEX 4117N 12311E

COMPLEX APPROXIMATELY 20 PER CENT CLOUD COVERED. NO MAJOR INDUSTRIAL OR MILITARY ACTIVITY OBSERVED IN CLOUD-FREE AREAS. THIRTEEN RAILROAD CARS AND 2 LOCOMOTIVES OBSERVED IN CLASSIFICATION YARDS.

25X1A

SECRET

NPLC/R-1447763

25X1A

HAI-CHENG COMPLEX 4052N 12245E

COMPLEX INCLUDES RAILROAD CLASSIFICATION YARD IN CENTER OF HAI-CHENG WITH 6 TRACKS, 17 RAILROAD CARS, AND 2 LOCOMOTIVES AND SECURED BARRACKS AREA ON SE EDGE OF HAI-CHENG WITH 2 ADMINISTRATIVE-TYPE BUILDINGS, 10 BARRACKS, 20 STORAGE/SUPPORT BUILDINGS, 2 CANVAS-COVERED PROBABLE TANKS, AND 2 CARGO TRUCKS WITH FA PIECES IN TOW. NO OTHER MILITARY ACTIVITY OBSERVED IN CLOUD-FREE AREAS.

25X1A

25X1A

TUNG-HUA COMPLEX 4142N 12556E

MILITARY INSTALLATION, COMPRISING BARRACKS AREA WITH MESS HALL AND 16 BARRACKS-TYPE, ONE ADMINISTRATIVE, AND 13 ASSOCIATED BUILDINGS, STORAGE AREA WITH 14 STORAGE-TYPE AND 10 SUPPORT BUILDINGS, AND VEHICLE MAINTENANCE AREA WITH APPROXIMATELY 30 BUILDINGS, OBSERVED 4.5 NM NE OF TUNG-HUA AT 4145N 12559E. ANOTHER MILITARY INSTALLATION, COMPRISING BARRACKS AREA WITH APPROXIMATELY 100 BUILDINGS, STORAGE AREA WITH 13 REVETTED STORAGE BUILDINGS, SUPPORT AREA WITH 25 BUILDINGS, AND FIRING RANGE, OBSERVED 2 NM ENE OF TUNG-HUA AT 4142N 12559E.

25X1A

SECRET  
NO FOREIGN DISSEM



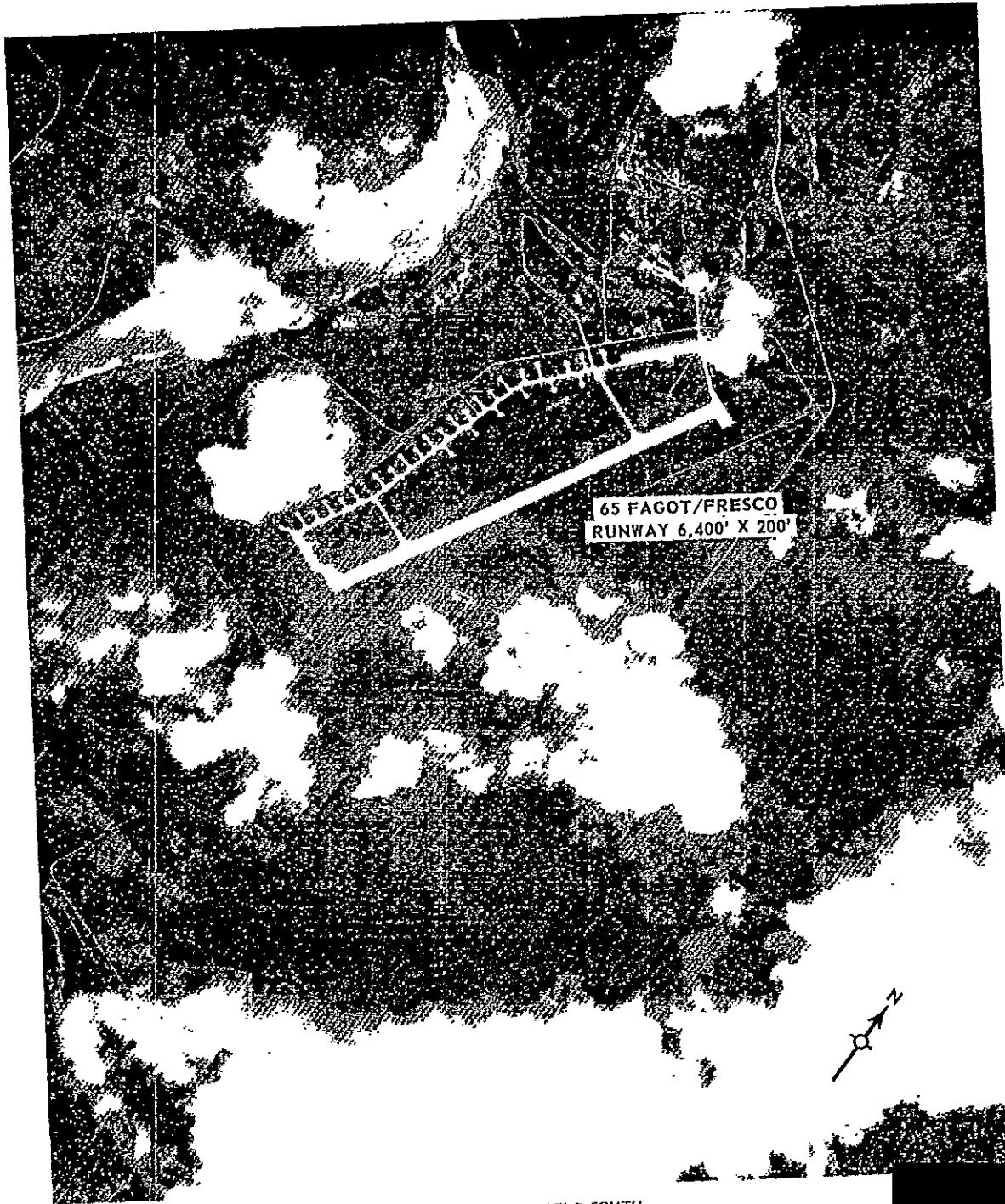


NIEN-TZU-SHAN ARSENAL

25X1A

SECRET  
NO FOREIGN DISSEM

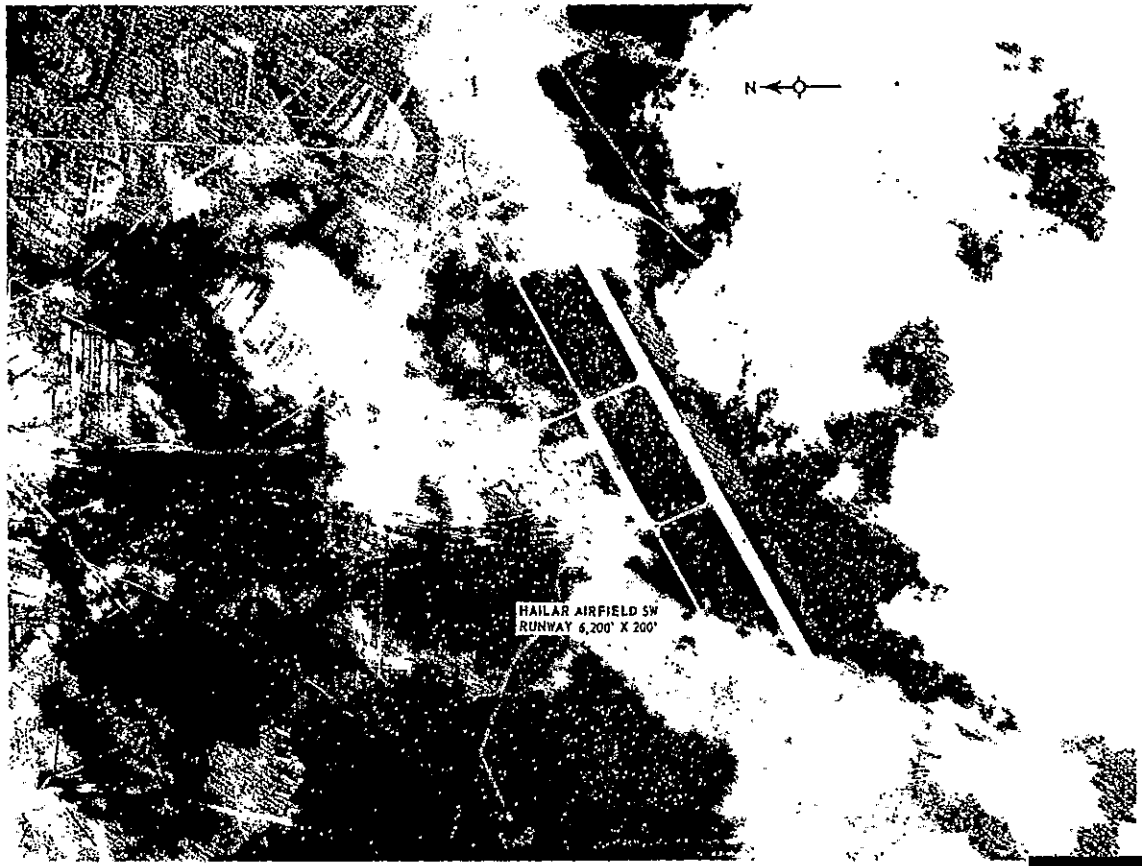
NPIC/R-1447/63  
ATTACHMENT 2



YEN-TAI AIRFIELD SOUTH

25X1A

SECRET  
NO FOREIGN DISSEM



HAILAR AIRFIELD SW  
RUNWAY 6,200' X 200'

HAILAR AIRFIELD SW

25X1A

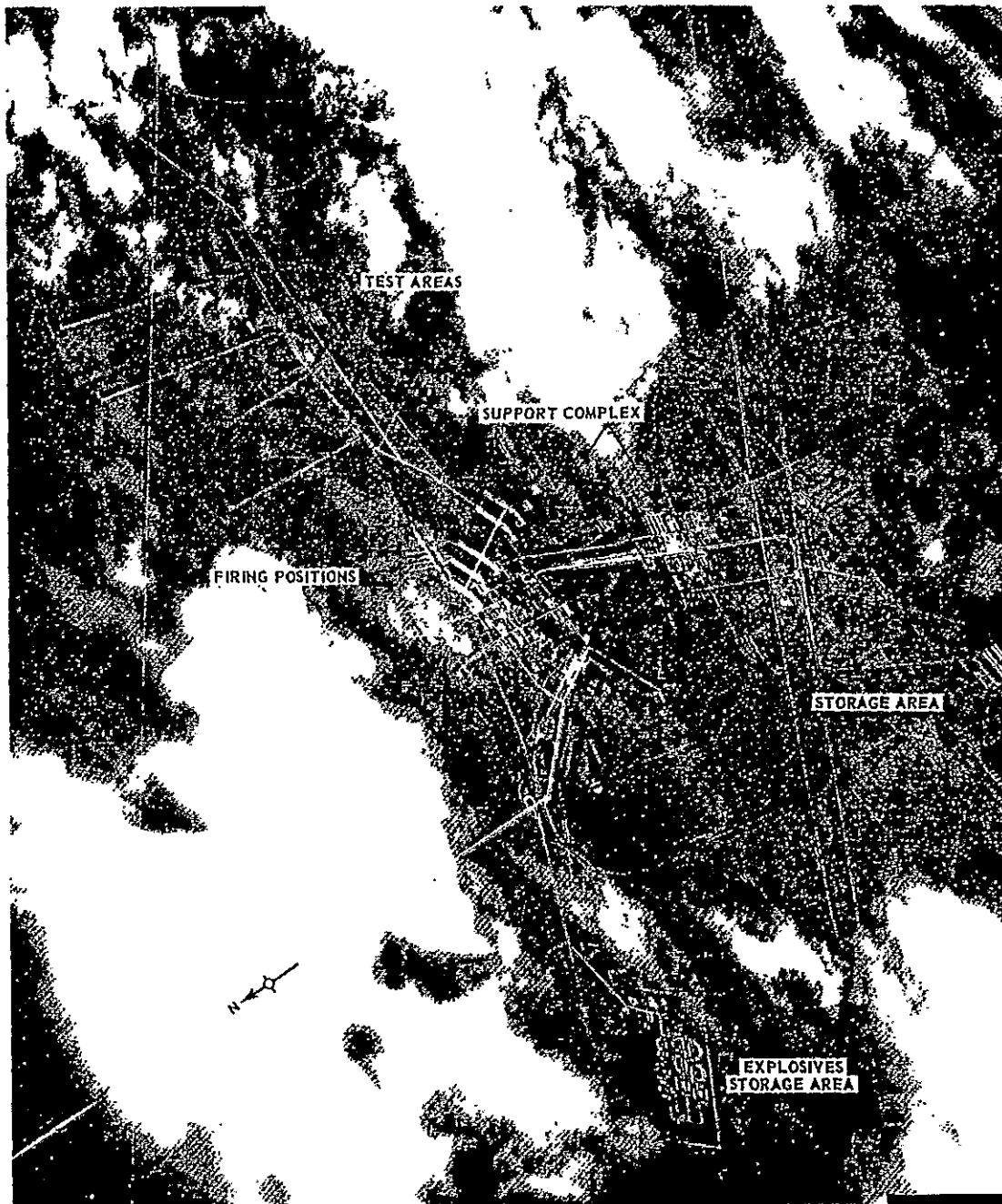
SECRET  
NO FOREIGN DISSEM

SECRET  
NO FOREIGN DISSEM

NPIC/R-1 447/69  
ATTACHMENT 3

SECRET  
NO FOREIGN DISSEM

NPIC/R-1447/63  
ATTACHMENT 4



TAO-AN ORDNANCE TEST FACILITY

25X1A

SECRET  
NO FOREIGN DISSEM

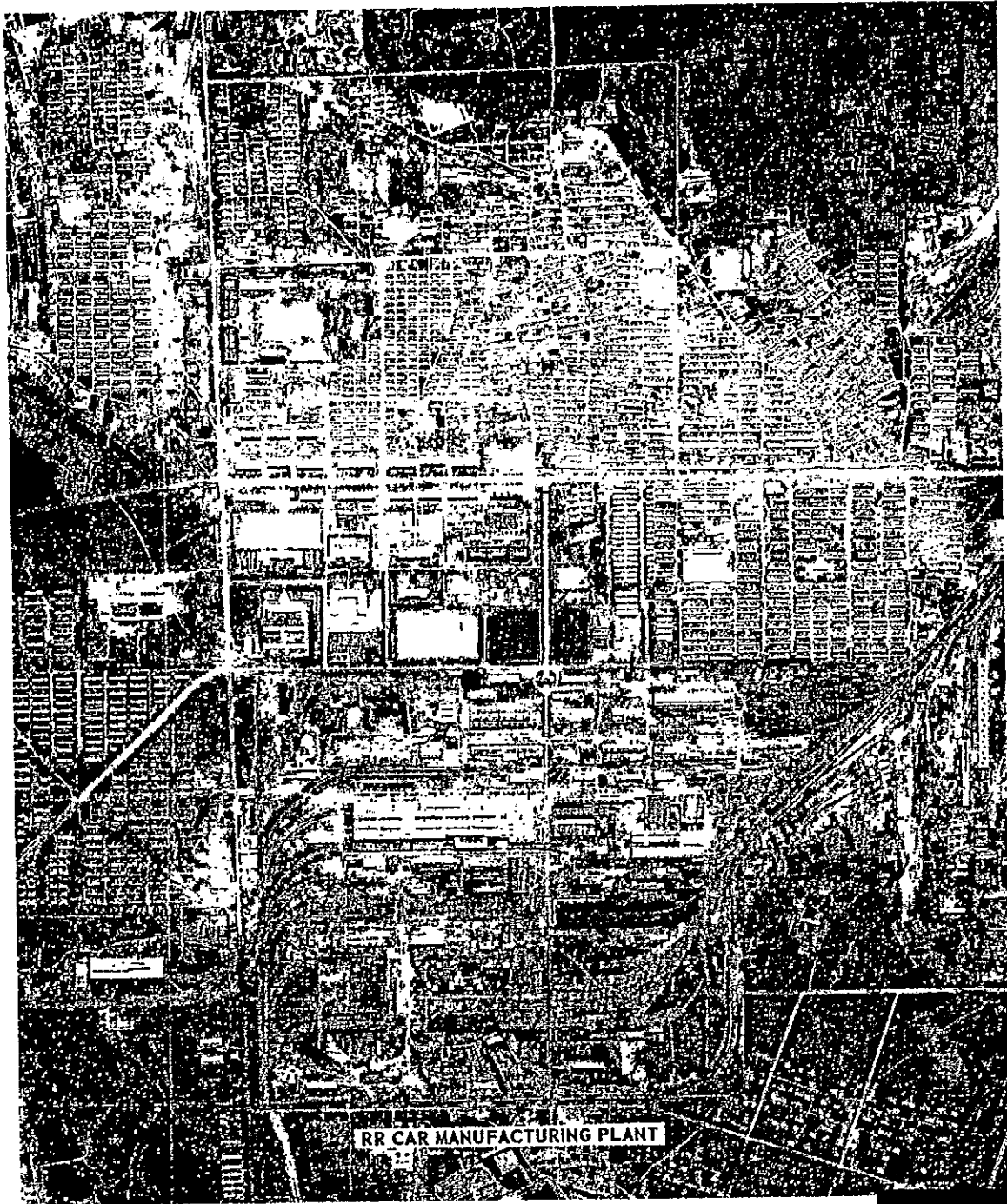


25X1A

HAI-LA-ERH COMPLEX

SECRET  
NO FOREIGN DISSEM

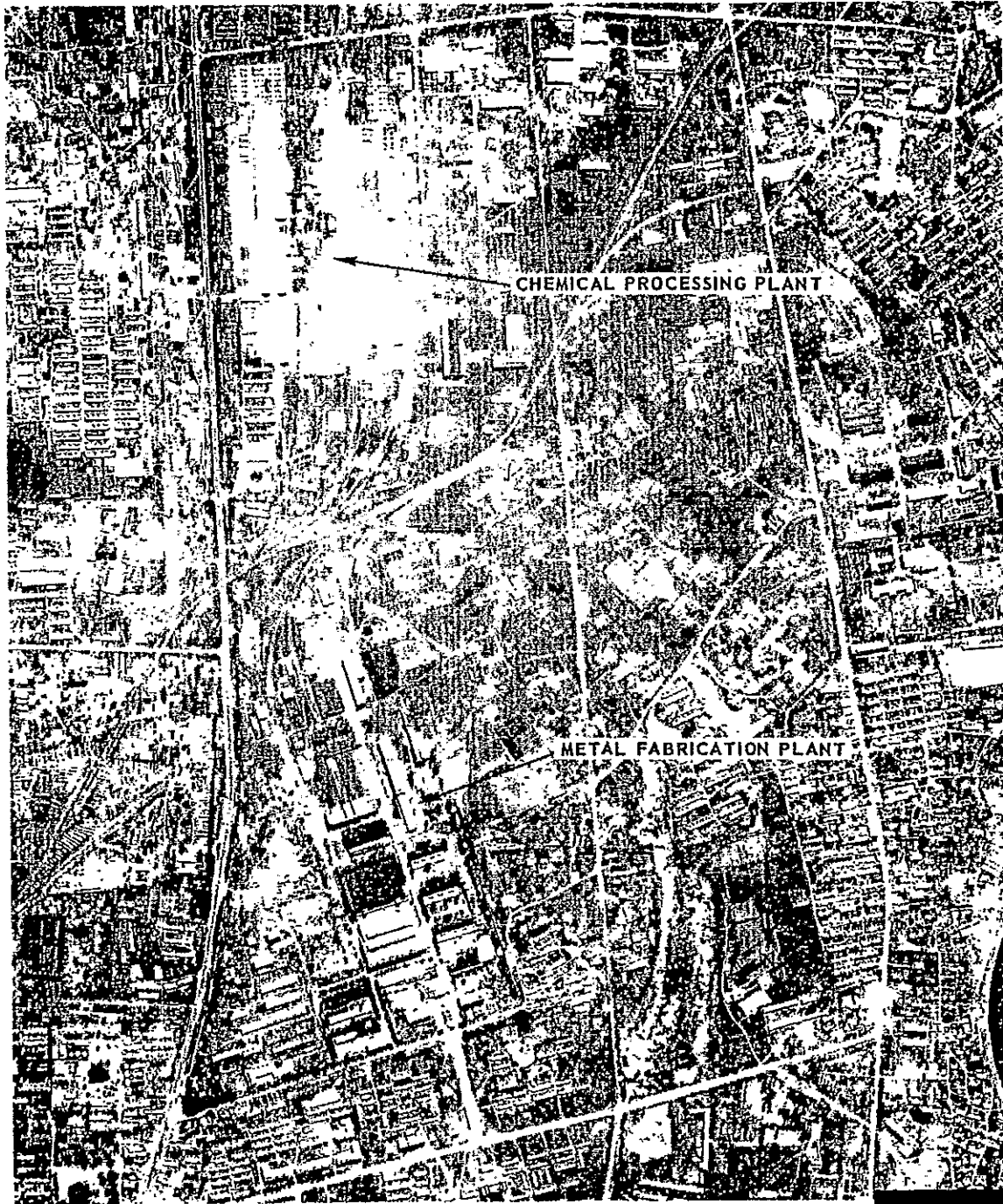
NPIC/R-1447/63  
ATTACHMENT 6



CHI-CHI-HA-ERH RAILROAD CAR MANUFACTURING PLANT

25X1A

SECRET  
NO FOREIGN DISSEM



CHI-CHI-HA-ERH CHEMICAL PROCESSING AND METAL FABRICATION PLANTS

25X1A

SECRET

NPIC/R-1447/63  
ATTACHMENT 8



CHI-CHI-HA-ERH WOOD PRODUCTS PLANT

25X1A

NO FOREIGN DISSEM



SECRET  
NO FOREIGN DISSEM

NPIC/R-1447/63  
ATTACHMENT 9



25X1A

FU-LA-ERH-CHI METAL FABRICATION AND THERMAL POWER PLANT

NO FOREIGN DISSEM

SECRET

NPIC/R-1447/63  
ATTACHMENT 10



POSSIBLE REFINERY UNDER CONSTRUCTION

25X1A

AN-TA-CHIAN, REFINERY UNDER CONSTRUCTION

NO FOREIGN DISSEM

SECRET

NPIC/R-1447/63  
ATTACHMENT 11



POSSIBLE REFINERY UNDER CONSTRUCTION

25X1A

AN-TA-CHAN, POSSIBLE REFINERY UNDER CONSTRUCTION

SECRET  
NO FOREIGN DISSEM

SECRET  
NO FOREIGN DISSEM

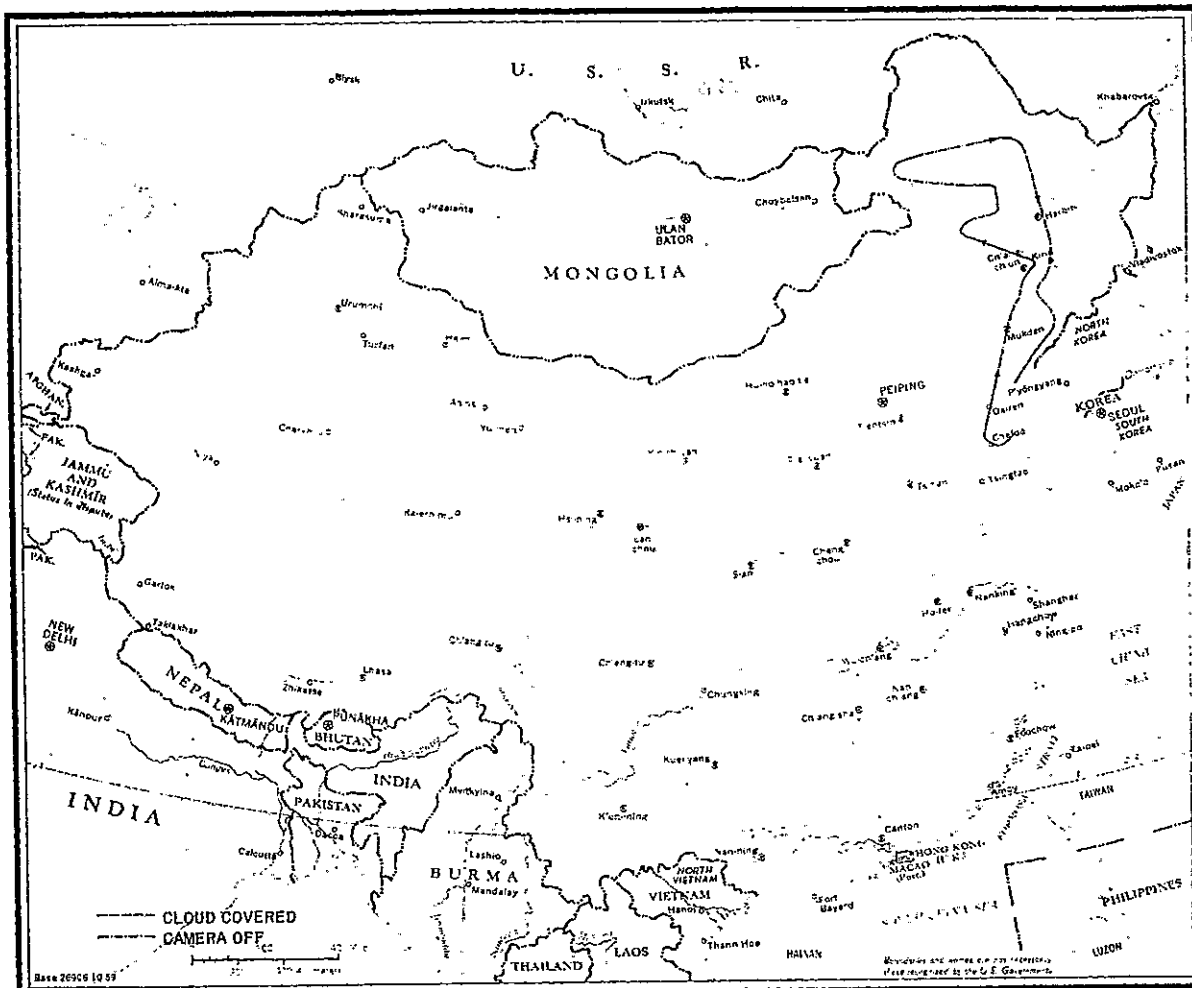
NPIC/R-1447/63  
ATTACHMENT 12



AN-TA-CHAN, UNIDENTIFIED INDUSTRY UNDER CONSTRUCTION

25X1A

SECRET  
NO FOREIGN DISSEM



SECRET  
NO FOREIGN DISSEM

SECRET  
NO FOREIGN DISSEM

NPIC/R-1447/63

APPROXIMATE TRACK OF

25X1A

SECRET  
NO FOREIGN DISSEM

SECRET  
NO FOREIGN DISSEM