

011



# DECK LOG BOOK

OF THE

U.S.S. \_\_\_\_\_ GONY \_\_\_\_\_

DD-508  
IDENTIFICATION NUMBER

COMMANDED BY

W. H. MORGAN, CDR, \_\_\_\_\_, U. S. N.

Attached to	_____	Division,
	_____	Squadron,
	_____	Flotilla,
	_____	Fleet,
	_____	Naval District,

Commencing \_\_\_\_\_ 0001 (+5R), 1 OCTOBER \_\_\_\_\_, 1952  
(zone time and date)

at \_\_\_\_\_ DESTROYER SUBMARINE PIERS, NORFOLK, VIRGINIA \_\_\_\_\_  
(location)

and ending \_\_\_\_\_ 2400 (+4Q), 31 OCTOBER \_\_\_\_\_, 1952  
(zone time and date)

at \_\_\_\_\_ 25°03'N, 71°27'W \_\_\_\_\_  
(location)

STATES SHIP

CONY (DD-508)

Friday 26 October

## SMOOTH REMARKS—CONTINUED

00-04 Steaming with Task Group 83.2 as a unit of TU 83.2.2 in an 8-ship concentric circular screen around USS RANDOLPH (CVS 15) on circle 5, Screen stations as follows: #1 USS LOWRY (DD 770), #2 USS WALLER (DD 466), #3 USS MURRAY (DD 576), #4 USS EATON (DD 510), #5 USS EATON (DD 510), #6 CONY, #7 USS BEALE (DD 471), and #8 USS BACHE (DD 470). On station the guide, RANDOLPH, bears 045°T, distance 5000 yards. Base course is 075°T at a speed of 9 knots. SOPA is COMCARDIV 16 and CTG 83.2 in RANDOLPH. CTG 83.2.2 in LOWRY. Commanding Officer, RANDOLPH and CTU 83.2.0. Screen Commander is COMDESRON 28 and CTU 83.2.2 in LOWRY. Boilers #1 and #3 are on the main steam line with the ship's electrical load on #1 and #2 s/s generators. Material Condition YOKE is set throughout the ship. Readiness Condition is IV; the ship is darkened with the exception of normal navigation lights. 0101- Changed base course to 290°T, changed base speed to 20 knots.

*J.M. Rowsey, Jr.*  
J.M. ROWSEY, JR.  
LT USN

04-08 Steaming as before. 0727- c/c to 000°T, c/s to 10 knots. 0737- c/c to 290°T, c/s to 20 knots.

*A.A. Bradick*  
A.A. BRADICK  
LTJG USNR

08-12 Steaming as before. 0815- Exercised the crew at general quarters. 0823- Conducted abandon ship drill. 0845- Secured from abandon ship drill. 0858- Secured from general quarters. 0915- c/Base course to 110°T; c/s to 10 knots. 0940- c/base course to 075°, c/base speed to 20 knots. 1141- c/base course to 080°. 1000- Made weekly test of magazine sprinkling and flooding systems; conditions satisfactory, test satisfactory. Made weekly test of degaussing gear; test satisfactory.

*P.M. Goorjian*  
P.M. GOORJIAN  
LTJG USN

12-16 Steaming as before. 1201- c/c to 085. 1230- c/c to 050, c/s to 12 knots. 1250- Guide is USS KASKASKIA (AO 27) in station #0. 1515- c/s to 20 knots. Proceeding to lifeguard station for EATON 1000 yards astern of KASKASKIA.

*J.V. Burchett*  
J.V. BURCHETT  
LTJG USN

16-18 Steaming as before. 1540- Commenced making approach alongside KASKASKIA to take on fuel. 1659- On station. 1700- First line over. 1705- Commenced fueling. 1759- Fueling completed.

*J.M. Rowsey, Jr.*  
J.M. ROWSEY, JR.  
LT USN

18-20 Steaming as before. 1815- All lines clear, c/s to 20 knots. 1820- c/c to 250°T, maneuvering to take station #6 in a concentric screen. When on station the guide bears 045°T, 5000 yards, the guide is KASKASKIA in station 0, base course 050°T, base speed 12 knots. 1837- Set condition LASW, investigating possible submarine contact. 1933- Secured from condition LASW. 1938- Maneuvering to take station #3 of concentric screen, base course 050°T, base speed 12 knots, on station the guide KASKASKIA will bear 293°T, 7700 yards. 1958- Maneuvering to take station #2 of concentric circular screen, on station the guide, RANDOLPH, will bear 090°T, 4000 yards. Base course 210°T, base speed 20 knots.

*A.A. Bradick*  
A.A. BRADICK  
LTJG USNR

20-24 Steaming as before. 2025- c/c to 114°; c/s to 20 knots. On station. 2202- Maneuvering to take station #1 of concentric screen, base course 114°T, base speed 20 knots. 2210- Proceeding to reject. Completed sonar investigation. 2229- c/c to 114°, c/s to 20 knots, on station.

EXAMINED: *P.M. Goorjian*  
P.M. GOORJIAN  
LTJG USN

00-04 Steaming in accordance with COMASFORANTAN msg. 232340Z with TG 83.2 less

USS WALTER (DD 466), USS LOWMY (DD 770), USS CONWAY (DD 507) and USS MURRAY (DD 576) as a unit of the 83.2.2.2.3.4.5.6.7.8.9.10.11.12.13.14.15.16.17.18.19.20.21.22.23.24.25.26.27.28.29.30.31.32.33.34.35.36.37.38.39.40.41.42.43.44.45.46.47.48.49.50.51.52.53.54.55.56.57.58.59.60.61.62.63.64.65.66.67.68.69.70.71.72.73.74.75.76.77.78.79.80.81.82.83.84.85.86.87.88.89.90.91.92.93.94.95.96.97.98.99.100.101.102.103.104.105.106.107.108.109.110.111.112.113.114.115.116.117.118.119.120.121.122.123.124.125.126.127.128.129.130.131.132.133.134.135.136.137.138.139.140.141.142.143.144.145.146.147.148.149.150.151.152.153.154.155.156.157.158.159.160.161.162.163.164.165.166.167.168.169.170.171.172.173.174.175.176.177.178.179.180.181.182.183.184.185.186.187.188.189.190.191.192.193.194.195.196.197.198.199.200.201.202.203.204.205.206.207.208.209.210.211.212.213.214.215.216.217.218.219.220.221.222.223.224.225.226.227.228.229.230.231.232.233.234.235.236.237.238.239.240.241.242.243.244.245.246.247.248.249.250.251.252.253.254.255.256.257.258.259.260.261.262.263.264.265.266.267.268.269.270.271.272.273.274.275.276.277.278.279.280.281.282.283.284.285.286.287.288.289.290.291.292.293.294.295.296.297.298.299.300.301.302.303.304.305.306.307.308.309.310.311.312.313.314.315.316.317.318.319.320.321.322.323.324.325.326.327.328.329.330.331.332.333.334.335.336.337.338.339.340.341.342.343.344.345.346.347.348.349.350.351.352.353.354.355.356.357.358.359.360.361.362.363.364.365.366.367.368.369.370.371.372.373.374.375.376.377.378.379.380.381.382.383.384.385.386.387.388.389.390.391.392.393.394.395.396.397.398.399.400.401.402.403.404.405.406.407.408.409.410.411.412.413.414.415.416.417.418.419.420.421.422.423.424.425.426.427.428.429.430.431.432.433.434.435.436.437.438.439.440.441.442.443.444.445.446.447.448.449.450.451.452.453.454.455.456.457.458.459.460.461.462.463.464.465.466.467.468.469.470.471.472.473.474.475.476.477.478.479.480.481.482.483.484.485.486.487.488.489.490.491.492.493.494.495.496.497.498.499.500.501.502.503.504.505.506.507.508.509.510.511.512.513.514.515.516.517.518.519.520.521.522.523.524.525.526.527.528.529.530.531.532.533.534.535.536.537.538.539.540.541.542.543.544.545.546.547.548.549.550.551.552.553.554.555.556.557.558.559.560.561.562.563.564.565.566.567.568.569.570.571.572.573.574.575.576.577.578.579.580.581.582.583.584.585.586.587.588.589.590.591.592.593.594.595.596.597.598.599.600.601.602.603.604.605.606.607.608.609.610.611.612.613.614.615.616.617.618.619.620.621.622.623.624.625.626.627.628.629.630.631.632.633.634.635.636.637.638.639.640.641.642.643.644.645.646.647.648.649.650.651.652.653.654.655.656.657.658.659.660.661.662.663.664.665.666.667.668.669.670.671.672.673.674.675.676.677.678.679.680.681.682.683.684.685.686.687.688.689.690.691.692.693.694.695.696.697.698.699.700.701.702.703.704.705.706.707.708.709.710.711.712.713.714.715.716.717.718.719.720.721.722.723.724.725.726.727.728.729.730.731.732.733.734.735.736.737.738.739.740.741.742.743.744.745.746.747.748.749.750.751.752.753.754.755.756.757.758.759.760.761.762.763.764.765.766.767.768.769.770.771.772.773.774.775.776.777.778.779.780.781.782.783.784.785.786.787.788.789.790.791.792.793.794.795.796.797.798.799.800.801.802.803.804.805.806.807.808.809.810.811.812.813.814.815.816.817.818.819.820.821.822.823.824.825.826.827.828.829.830.831.832.833.834.835.836.837.838.839.840.841.842.843.844.845.846.847.848.849.850.851.852.853.854.855.856.857.858.859.860.861.862.863.864.865.866.867.868.869.870.871.872.873.874.875.876.877.878.879.880.881.882.883.884.885.886.887.888.889.890.891.892.893.894.895.896.897.898.899.900.901.902.903.904.905.906.907.908.909.910.911.912.913.914.915.916.917.918.919.920.921.922.923.924.925.926.927.928.929.930.931.932.933.934.935.936.937.938.939.940.941.942.943.944.945.946.947.948.949.950.951.952.953.954.955.956.957.958.959.960.961.962.963.964.965.966.967.968.969.970.971.972.973.974.975.976.977.978.979.980.981.982.983.984.985.986.987.988.989.990.991.992.993.994.995.996.997.998.999.1000.

LTJG V.A. BURCHETT USN

04-08 Steaming as before. 0415- Manuevering to take rescue destroyer station #1 on axis

of 055°T. 0429- c/c to 055°T, c/s to 15 knots, flight course and speed. 0435- Commenced flight operations. RANDOLPH bears 075°T at a distance of 1500 yards. 0446- Completed flight operations. Showing normal navigation lights, manuevering to resume screen station. 0500- Changed base course to 114°T, base speed is 20 knots. 0513- On station. 0600- WALTER, CONWAY, MURRAY, and LOWRY joined COMDESRON 28 and CTU 83.2.2 assumed command of the screen. 0608- Manuevering to take station #8 in a ship concentric circular screen on circle 5 around RANDOLPH. Other stations as follows: #1 CONWAY, #2 LOWRY, #3 BACHER, #4 WALTER, #5 EATON, #6 MURRAY, #7 BEALE. When on station the guide, RANDOLPH, bears 000°T, distance 5000 yards. 0659- c/c to 010°T while conducting flight operations. 0706- c/c to 114°T, flight operations completed. 0715- c/c to 170°T, c/s to 20 knots on station. 0735- c/s to 15 knots. 0744- c/c to 025°T. 0745- Mustered the crew at foul weather parade. Absentees; none. 0746- c/s to 20 knots. Manuevering to take rescue destroyer station #1 on axis of 030°T. 0757- c/c to 030°T, c/s to 12 knots, flight course and speed. 0759- On station. RANDOLPH bears 050°T, distance 1500 yards.

LT J.M. ROMSEY, JR. USN

08-12 Steaming as before. 0812- Manuevering to take station #8 of concentric circular screen

Base course 0450°T, base speed 12 knots. 0824- c/c to 045°T, c/s to 12 knots. 0919- c/c to 120°T. 1000- Made daily inspection of magazines and smoke powder samples. Conditions normal. 1019- c/c to 030°T. 1031- Manuevering to take RD station #1. Flight compen 0600°T, speed 12 knots. 1056- c/c to 030°T. 1111- c/c to 050°T. 1112- On station, guide bears 035°T, 4000 yards. Station #1 EATON, #2 WALTER, #3 BEALE, #4 CONY, #5 MURRAY. Base course 0600°T, base speed 12 knots.

LTJG A.A. BRADICK USNR

12-16 Steaming as before. 1210- Manuevering to take rescue destroyer station #1 on axis

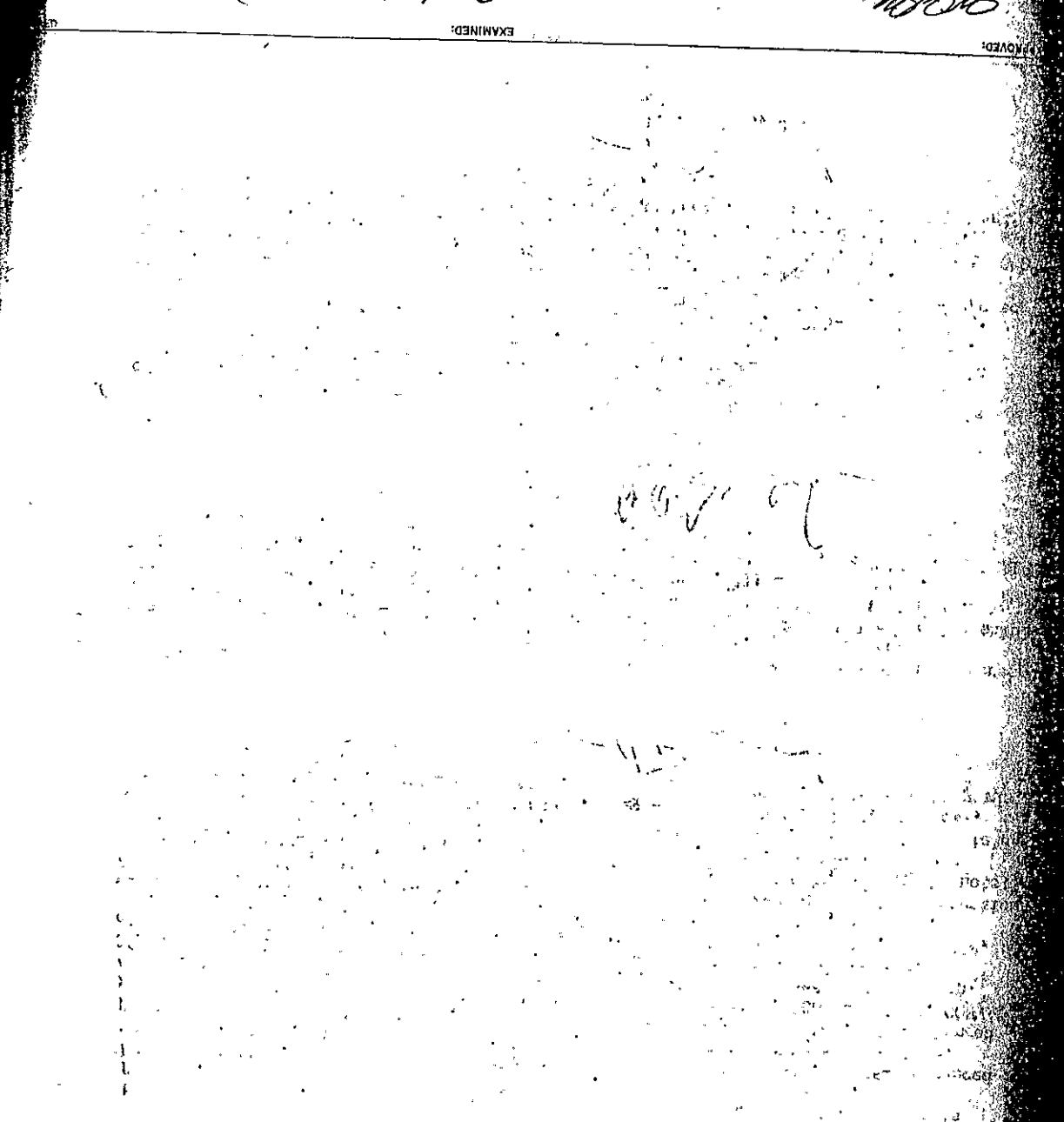
of 050°T. 1225- c/c to 050°T, c/s to 12 knots, flight course and speed. 1227- On station. 1230- Completed flight operations. 1245- Manuevering to regain screen station #4. RANDOLPH bears 036°T, distance 4000 yards. 1250- On station. 1253- c/c to 000°T, 1257- c/c to 340°T. 1310- c/c to 045°T. 1333- c/c to 340°T. 1352- Manuevering to take rescue destroyer station #1 on axis of 045°T. 1410- c/c to 340°T. 1415- Manuevering to regain screen station #4. 1420- On station. 1447- Manuevering to take rescue destroyer station #1 on axis 050°T. 1450- c/c to 050°T, speed 12 knots, flight course and speed. 1453- On station. 1505- c/c to 340°T. 1525- c/c to 045°T. 1552- c/c to 170°T, c/s to 20 knots. Proceeding with BEALE and MURRAY to investigate possible submarine contact.

LT J.M. ROMSEY, JR. USN

*M. H. Moran*  
M. H. MORAN, CDR.

EXAMINED:

Course of Ship



*J. V. Bennett*  
J. V. BENNETT  
LTJG USN

Steaming as before. 2052- Submarine surfaced. 2120- Submarine identified as KORAFIX, nationality: USSR, on course 090°, speed 5 knots. 2227- Passed submarine 100 yards to starboard for better identification. 2308- Maneuvering to remain within 3000 yards of KORAFIX.

*J. V. Bennett*  
J. V. BENNETT  
LTJG USN

Steaming as before. 1640- Maneuvering on various courses at various speeds while also helicopter sonar contact. 1642- Set Condition IASW. Sonar contact - Maneuvering to remain within 3000 yards of contact. 1729- Challenged submarine contact by dropping five (5) hand grenades. 1753- Secured from Condition IASW. 1900- CTU 83.2 assumed command. IOMRY replaced MURRAY in plintheel circle three.

Saturday 27 Oct 1968

REPORT ONLY (DD FORM 1300)

UNITED STATES SHIP GORP (DD 352) Sunday 28 October 1962

SMOOTH REMARKS-CONTINUED

00-04 Steaming in accordance with COMASFCENTAW msg. 220340Z with TU 83.2.3 in a three ship pinhead, circle three around soviet submarine KARALX. Base speed is 15 knots. 10 other ships are USS IOWAY (DD 770) and USS BEALE (DD 470). USS HURRAY (DD 576) is on force. SOA and QTC is CTR 03.2.3 and COMSECEN 28 in IOWAY. Boiler #1 and #3 on the main steam line, the plant is split, and the ships electrical load is on ships service generators #1 and #2. Mainline condition III and Material condition YOKE are set throughout the ship. The ship is darkened except for normal navigation lights. 0030- Assigned to force. 0103- Came to course 340, speed 20 knots to take station #3 of a few ship ahead, into station #0, bearing 270, range 4000 yards. 0335- c/c to 060. 0359- c/c to 150. 0700- On station, base course 208, speed 10 knots. 0735- c/c to 060. 0359- c/c to 150.

*[Signature]*  
LTVG  
A.V. BURCHETT  
USN

04-08 Steaming as before. 0448- c/c to 040. 0448- c/c to 040. 0448- c/c to 040. 0506- c/c to 045. 0506- c/c to 045. 0511- c/c to 120. 0515- c/c to 120. 0528- c/c to 15 knots. 0528- c/c to 085. 0700- Set all clocks ahead one hour to conform to Quebec Zone time.

*[Signature]*  
LTVG  
P.M. COCHRAN  
USN

08-12 Steaming as before. 0922- Maneuvering to take Lifeguard station 1000 yards eastern of RAMDIPA. Reestablish course to 090. 0930- On station. 0942- Set the fueling and machine detail. 0900- Take daily inspection of magazines and smokeless powder as per. 1012- Commenced making approach on RAMDIPA. 1016- First line over. 1050- c/c to 12 knots. 1015- Alongside RAMDIPA c/c to 12 knots. Maneuvering to take Lifeguard station 1000 yards eastern of RAMDIPA. 1051- Secured the fueling and highline detail. 1059- On station. 1126- Maneuvering to take station #2 of a conedric circular 1151- On station. 1151- Maneuvering to take Lifeguard station 1000 yards eastern of RAMDIPA.

*[Signature]*  
LTVG  
J.H. RUMSEY, JR.  
USN

12-16 Steaming as before. 1230- Proceeding on course 270, speed 20 knots, to join CTU 82.3. 1245- On station 2000 yards South of KARALX, course 090, speed 8 knots. 1415- Detached on course 215, speed 25 knots, to take station #4 of five ship bearing screen on circle four. Guide is RAMDIPA bearing 252, range 4000 yards in station #0. Other ships as follows: #1 HURAY, #2 WALTER, #3 CONY, #4 IOWAY, and #5 CORVY. USS ALDRICH (AR 10) and BEALE are in company. Base course 248. Base speed 20 knots.

*[Signature]*  
LTVG  
A.V. BURCHETT  
USN

13-18 Steaming as before. 1538- c/c to 075. 1620- c/c to 065. 1657- c/c to 248. c/c to 20 knots.

*[Signature]*  
LTVG  
M.M. COCHRAN  
USN

18-20 Steaming as before.

*[Signature]*  
LTVG  
A.V. BURCHETT  
USN

20-24 Steaming as before.

*[Signature]*  
LTVG  
J.H. RUMSEY, JR.  
USN