

DISPATCH	CLASSIFICATION SECRET /R/POK	PROCESSING ACTION
	TO Chief, WH Division	MARKED FOR INDEXING
INFO		NO INDEXING REQUIRED
FROM Chief of Station, Mexico City		ONLY QUALIFIED DESK CAN JUDGE INDEXING
SUBJECT LITEMPO/Procedure for Obtaining Mexican Transit Visas for Cubans		MICROFILM
ACTION REQUIRED REFERENCES		
<p>1. In September 1960, Mexican visa regulations in regard to entry into Mexico of Cuban nationals were changed to conform generally to the U.S. State Department treatment of Cuban nationals. Under the new regulations, all Cuban requests for entry were referred to Gobernación in Mexico City. This had the effect of prohibiting the legal entry of Cubans into México except after long delays and/or extra-legal payments to secure preferred attention. Under the new regulations, a large backlog of requests built up, which has continued to increase to the present time. This has developed into a paradise for the "coyotes" who, for a price, use their "contacts" to secure preferred attention for their "clients".</p> <p>2. Because of KUBARK interest in obtaining the legal entry into México of certain Cuban nationals, a special channel was set up in November, 1960, through LITEMPO-1 and LITEMPO-2, which enabled us to secure entry permits. The channel has been utilized to secure extensions of permits of Cubans whose legal time of residence expired, to arrange for change in residence status, and to secure exit permits for legal departure of Cubans who had entered México illegally.</p> <p>3. The majority of Cubans of interest to KUBARK whose requests were processed through the project channel, came through Mexico in transit to the U.S. With the granting of "visa waivers" by U.S. authorities, such Cubans could be handled rapidly through the project channel. The channel functioned without difficulty until May 1963, when the US Government invalidated all visa waivers. This came at a time when a number of authorizations had been secured through the project channel, which had not been acted upon by the Cuban recipients. Honoring the request of the U.S. State Department to refuse recognition or validity to previously granted visa waivers, the Minister of Government ordered that no entry permits would be granted to Cubans who wished to transit Mexico enroute to the U.S. unless such Cubans could furnish proof that they would be legally admitted to the U.S. This automatically prevented Cubans resident in Cuba from receiving Mexican entry permits, since it was impossible for them to secure U.S. visas there.</p> <p>(Continued)</p> <p>Distribution: 3 - C/WHD</p>		
CROSS REFERENCE TO	DISPATCH SYMBOL AND NUMBER EBSA-22365	DATE 25 October 1963
	CLASSIFICATION SECRET /R/POK	HQS FILE NUMBER 50-6-91/4

Authority EO 1.0501

By W. NARA Date 06/18/05

CLASSIFICATION

KCHER/KAPOK

DISPATCH SYMBOL

BR22-22755

4. The above-described situation required some alteration in the operation of the project channel. Whereas LITZKO-1 previously secured the "visa buses" from either the Sub-Secretary or the Official Mayor directly, it now became necessary to secure the signature of approval from the Minister in every case.

5. The Minister established certain criteria which must be met before he will sign the solicited. These are as follows:

- a. The request must originate through the project channel.
- b. The solicited must be signed by LITZKO-5 (in pseudonym).
- c. The signed solicited must be brought to him personally by LITZKO-1 or LITZKO-4.

6. The Minister's reasons for the above conditions are the following:

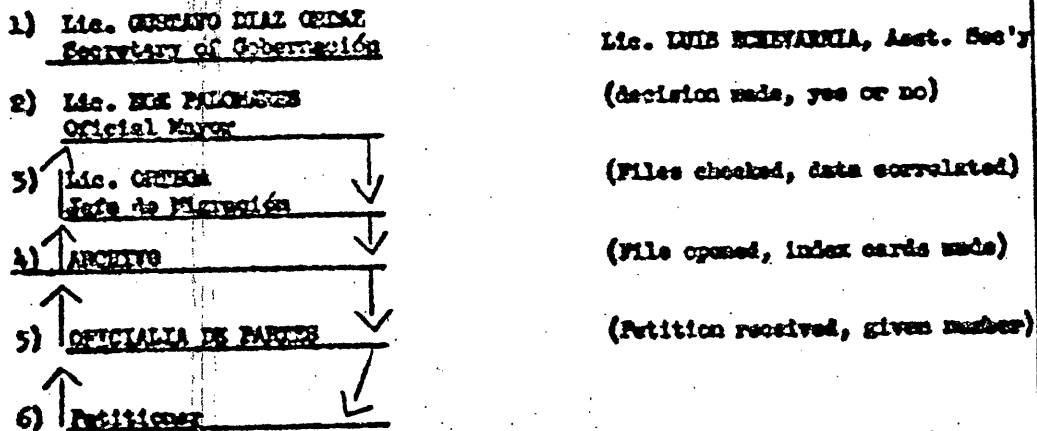
- a. The danger that the project channel will be used by "coyotes" to extort money from the petitioners, which would give the impression that the Minister is either in the business, or allowing himself to be "used" by people who are.
- b. The very natural desire to prevent foul-ups in the administration of the various departments of Gobernación, which are in a bad state normally, but which could be hopelessly bogged down with multiple requests by the same person which would be handled at the same time through the normal procedure and through the project channel.
- c. Considering the current political picture, the Minister does not wish to give examination to political bushwhackers, who would be delighted to circulate the accusation that he is "working for the Bourgeois".

7. The following charts show the manner in which visas are obtained:

I: Chart setting out the normal procedure for handling requests for Mexican entry permits.

II: Chart showing project channel operation.

I: NORMAL HANDLING - MEXICAN ENTRY PERMITS



Above is set forth the procedure by which the normal requests for Mexican visas are handled. With reference to requests of Cubans, at the present time there are approximately 4,000 requests for visas being held at (5) above. LITZKO-1 estimates that, of this number, less than 10% will be granted. NO requests to transit Mexico to enter the U.S. are being granted under normal

Authority EO 1.0501
By BJ NARA Date 06/18/05

CLASSIFICATION
SECRET/KAPOK

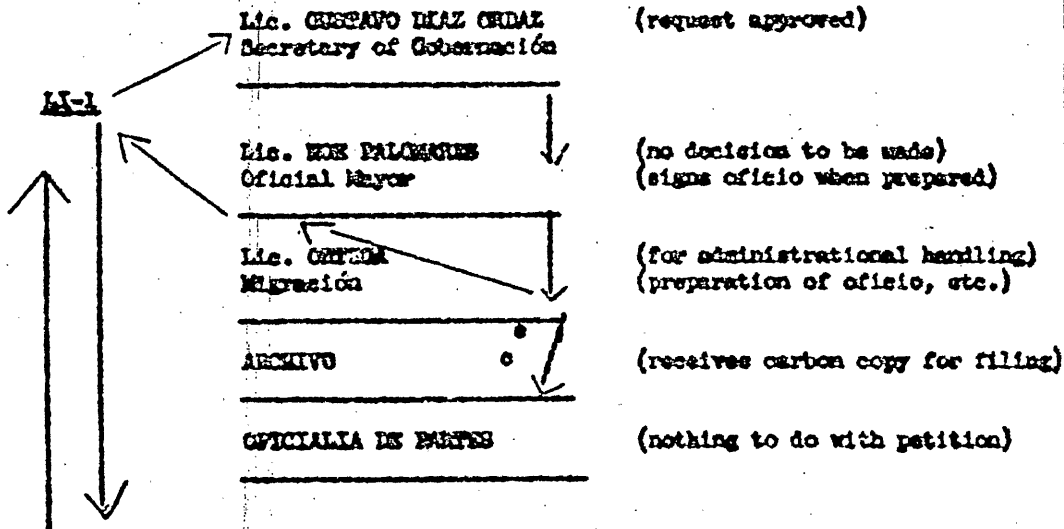
U.S. WATCH SYMBOL AND NO.
DSMA-22365

procedures, which include a direct order vs. the granting of such permits. This order was promulgated at the request of the U.S. State Department, at the time when the latter invalidated all visa waivers.

It will be noted that the Minister does not take a part in the actual mechanics of granting or not granting visas. In rare cases the Official Mayor sends a case to Lic. Echavarría, the Assistant Secretary.

The length of time for a normal request to be processed and answered varies, of course, but source estimates that the average time would be around three months.

II: LITEROO CHAVARRIA - MEXICAN VISA PERMITS



LI-5 prepares solicitud when request received by Jeremy K. BENADUM from Station.

When Oficio and cable approved, sends the confirming cable, furnishing Jeremy K. BENADUM with carbon copy.

8. In some cases where a visa has been denied through normal channels, the Station has been able to arrange via the project channel although several weeks are required to get this approval.

Willard C. CURRIS

Distribution:
15 - C/MSD
2 - Files